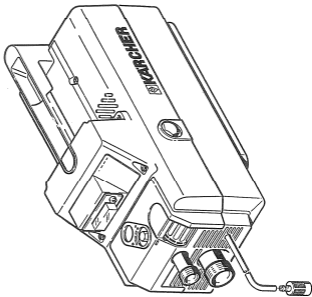


**HD 690**

**A1**

Gebruik de afbeelding  
om de juiste Component Parts  
te vinden. Use the picture  
to find the correct accessories.

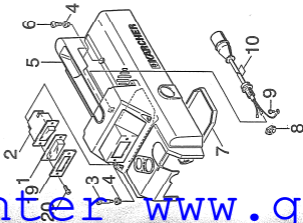


unter [www.g](http://www.g)

Pos. Bezeichnung Icon Description Pos. Désignation	Teil-Nr. Part-No. No. pièce	Stück Qty. Nbr.
--	-----------------------------------	-----------------------

1 Schutzkappe/ Protecting Cap/ Capot Protection	6.031-441.0	1
2 Wippschalter/ Rocker Switch/ Commutateur à Bascule	6.031-461.0	1
3 Schneidschr./MSx32/ Screw/ Vis	6.303-077.0	4
4 Buchse/ Bush/ Rondelle	5.112-292.0	6
5 Haube-Oberseite/ Cap-Upper/ Capot Partie Supér.	5.056-267.0	1
6 Linsenschr./MSx18/ Oval Head Screw/ Vis A Tête Rondée	6.303-075.0	2
7 Profildichtung/ Profil/ Joint Profile	5.305-135.0	1

8 Gegenmutter PG 13,5 siehe B11/Grafel F16/G16/ Counter Nut, see Board F16/G16/ Centre-Ecran voir Tableau F16/G16		
9 Erdungsschr.-M6x8 siehe B11/Grafel F16/G16/ Screw see Board F16/G16/ Vis voir Tableau F16/G16		
10 Kabel mit Stecker siehe B11/Grafel F16/G16/ Cable With Plug see Board F16/G16/ Câble Avec Fiche voir Tableau F16/G16		
19 Abmess./ Frame/ Cadre	5.050-031.0	1
20 Schraube/ Screw/ Vis/ M6x12	6.303-055.0	2

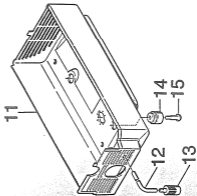


Gruppe 1: Einzelteile  
Group 1: Component Parts  
Groupe 1: Pièces détachées

C1

HD 690

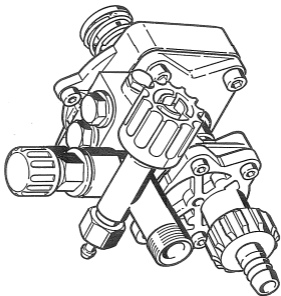
Pos. Item Pos.	Benennung Description Description	Teil-Nr. Part-No. No. piece	Stück- Qty. Qty.
11	Haube-Unterteil/ Cap Bottom/ Capet Partie Infer.	5.066-229.0	1
12	Schlauch Nm S/ Flexible Tube/ Ingas Flexible Cim	6.388-218.0	1
13	Füller/ Filler/ Filtre	6.404-277.0	1
14	Auflager/ Support/ Appui	5.057-034.0	3
15	Linsenstr.-Mutter/ Oval Head Screw/ Vis A Tête Bombée	6.707-034.0	3



unter [www.g...](http://www.g...)

**HD 690**

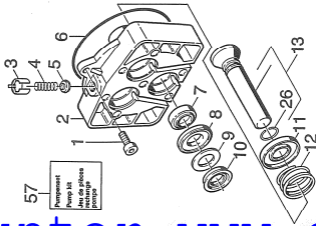
**A 2**



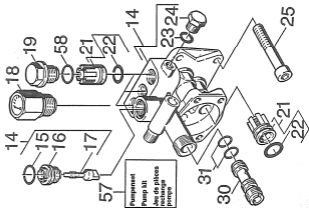
Gruppe 2: Pumpensatz  
Gruppe 2: Pump Unit  
Gruppe 2: Moto-pompe

unter [www.g...](http://www.g...)

Pos. Item Pos.	Beschriftung Description Designation	Teil-Nr. Part-No. No. pièce	Stück- Qty. Qté.
1	Zell-schr. M8x12/ Cheese Head Screw/ Vis A Tête Cylindr.	6.304-016.0	2
2	Gehäuse/ Housing/ Boîtier	5.090-380.0	1
3	Foreteller/ Preform/ Préforme	5.030-533.0	1
4	Schraubenfeder/ Coil Spring/ Ressort A Boudin	5.332-209.0	1
5	Ventilteller/ Valve Head/ Tête de Soupape	5.582-080.0	1
6	O-Ring O-Ring/ Joint Torique	6.362-097.0	1
7	Nutring 16x24x2/ Packing Ring/ Joint Ballure	6.365-322.0	3
8	Scheibe/ Washer/ Rondelle	5.115-385.0	3
9	Scheibe/ Disk/ Disque	5.115-425.0	3
10	Nutring 16x24x4,6/ Grooved Ring/ Joint Es U A Lavres	6.365-321.0	3
11	Foreteller/ Preform/ Préforme	5.070-476.0	3
12	Schraubenfeder/ Coil Spring/ Ressort A Boudin	5.332-206.0	3
13	Kolben Kopf./ Plunger Comp./ Piston Compl.	4.583-130.0	3
26	Sonnring A 16/ Sealing Ring/ Jointif	7.340-478.0	3
57	Pumpensatz stichtafel M16/ Pump kit see board M16/ Jeu de pièces recharge pompe voir tableau M16	2.883-162.0	1



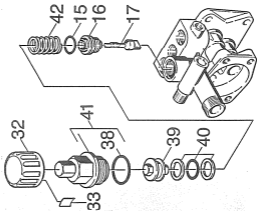
Pos. Item Pos.	Bezeichnung Description Designation	Teil-Nr. Part-No. No. de pièces	Stück- Zahl Qty.
14	Zylinderkopf/ Cylinder Head/ Cylindre	4.550-103.0	1
15	O-Ring 12x2/ O-Ring/ Joint Torique	6.362-109.0	1
16	Ventil-Sitz/ Valve Seat/ Siège Soupape	5.591-103.0	1
17	Formschraube/ Special Screw/ Vis Profilée	5.305-146.0	1
18	Manometer/ Manometer/ Manometre	6.421-142.0	1
19	Ventilschraube/ Valve Screw/ Rection de Soupape	5.503-175.0	2
21	Ventil Kompletz/ Set of Valves/ Ensemble de Soupape	4.560-157.0	6
22	O-Ring 13x2/ O-Ring/ Joint Torique	6.362-281.0	6
23	O-Ring 8x2/ O-Ring/ Joint Torique	6.362-101.0	3
24	Verschluss-Schraube/ Screw plug/ Bouchon	5.411-070.0	3
25	Zf.-schr. M8x2/ Cheese Head Screw/ Vis A Tête Cylindr.	6.204-046.0	4
30	Bassenselmsatz/ Nozzle Insert/ Insert de Tuyere	5.249-075.0	3
31	O-Ring 9x1,5/ O-Ring/ Joint Torique	6.362-394.0	2
57	Pumpenset siehe Bildzettel HD/Peep kit see board H/S/ Jeu de pièces rechange pompe voir Tableau H/S/	2.893-162.0	1
58	O-Ring 17,5x2,4/ O-Ring/ Joint Torique	6.362-100.0	4



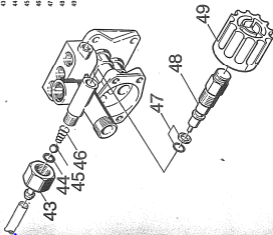
Pos. Bezeichnung  
 Item Description  
 Pos. Designation

Teil-Nr.  
 Part-No.  
 No. piece

15	O-Ring 12x2/ O-Ring/ Joint Torique	6.362-169.0	1
16	Ventil-Sitz/ Valve Seat/ Siège Soupape	5.601-103.0	1
17	Formschrauber/ Special Screw/ Vis Profilée	5.205-146.0	1
32	Griff/ Handle/ Poignée	5.201-394.0	1
33	Sicherungsfeder/ Retaining Spring/ Ressort P'Arret	6.313-009.0	1
38	O-Ring 18x2,5/ O-Ring/ Joint Torique	6.262-075.0	1
39	Kolben/ Piston/ Piston	5.553-176.0	1
40	O-Ring 40/1.2x1./ O-Ring Compl./ Joint Torique Compl	6.262-375.0	1
41	Verschraubungsstück/ Screw Fitting/ Raccords Visse	4.401-053.0	1
42	Schraubenfeder/ Coil Spring/ Ressort A Boudin	5.232-207.0	1

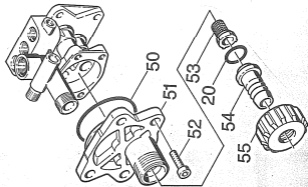


Pos.	Benennung Item Description Pos. Designation	Stück- Menge Qty. No. piece	Teil-Nr. Part-No. No. piece
43	Schlauchrippl / Hose Steel/ Banded Four Tubes	1	5.443-209.0
44	O-Ring 6x2/ O-ring/ Jointet Verique	1	6.352-303.0
45	Kugel 7/ Steel Ball/ Balle 3" acier	1	7.401-909.0
46	Schraubenfeder/ Coil Springs/ Ressort A Boudle	1	5.332-124.0
47	O-Ring 1x1.1st./ O-ring Campl/ Jointet Torlose Campl	1	6.352-305.0
48	Spindel/ Spindial/ Pivot	1	5.291-032.0
49	Griff/ Handler/ Poignée	1	5.321-123.0





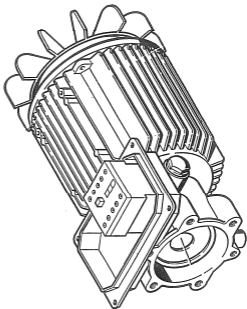
Pos.	Benennung Item Description Pos. - Designation	Teil-Nr. Part-No. No. pièce	Stück Qty. Nbr.
20	O-Ring 13,3x2,4/ O-Ring/ Joint Torique	6.300-078,0	1
50	O-Ring 50x2/ O-Ring/ Joint Torique	6.300-561,0	1
51	Gehäusedeckel/ Cover/ Couvercle	5.000-097,0	1
52	Zyl. schr. M8x20/ Cheese Head Screw/ Vis A Tête Cylindr.	6.304-023,0	4
53	Stab/ Strainer/ Passoire	6.474-251,0	1
54	Schlauchstopfen/ Hose Stem/ Rimmed Hour Tugou	5.443-029,0	1
55	Mutter/ Nut/ Ecrou	5.330-066,0	1



Gruppe 3: Meier  
Gruppe 4: Meier  
Gruppe 5: Meier  
Gruppe 6: Meier

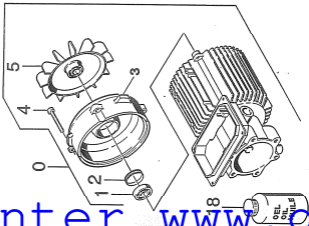
A 3

HD 690

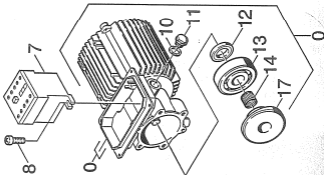


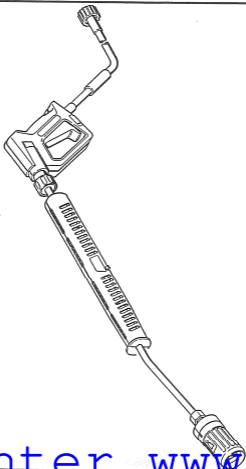
unter [www.g](http://www.g)

Pos.	Rechange Num. description Pos. designation	Telle-Nr. Part-No. No. piece	Stück Qty. Qty.
0	MOTOR Komp./ Motor Complete/ Moteur Complet	4.029-151.0	1
1	Kugellager 6003-2rs/ Ball Bearing/ Roulement A 9111es	7.401-105.0	1
2	Toleranzring 35x6/ Tolerance Ring/ Cône	6.343-015.0	1
3	Deckel/ Cover/ Flapque Arrière	5.063-001.0	1
4	Schraubenzieher M 5x45 / Screw / Vis	6.307-088.0	4
5	Laufkranz/ Fan Impeller/ Rose de Ventilateur	5.002-024.0	1
18	Getriebeöl/ Gear Lubricant Oil/ Huile à Engrenages	6.288-016.0	1L

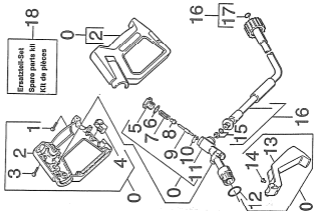


Pos. Num. Pos.	Bearnung Description Pos. Designation	Teil-Nr. Part-Nr. No. Piece	Stück Qty. Nos.
0	Motor compl./ Motor Complete/ Moteur Complet	4.623-151.0	1
7	Schütz 4 00/200V/ Contactor/ Contactor	6.832-173.0	1
8	Schweißschraube M 4x12/ Screw/ Vis	7.363-507.0	2
10	Dichtung/ Seal/ Joint	6.362-585.0	1
11	Verschlusschraube/ Screw Plug/ Vis de Fermeture	5.411-062.0	1
12	M.diechtringe2x3x7/ O11 Seal/ Bague A Levres Ress	7.367-008.0	1
13	Agelager 7205 B/ Roulement Avant	7.401-032.0	1
14	Toleranzhülse Ø 17/ Tolerance Proof/ Bouteille Tolérance	6.343-028.0	1
17	Fauleischiibe/ Wash Plate Compl./ Visée de Nacation	5.120-149.0	1





POS. ITEM	REMARKS DESIGNATION POS. DESIGNATION	ITEM-NO. PART-NO. NO. PIÈCE	PRICE CITY MARK.
0	HAUSEHÄLTFÄHIGKEIT/ TRIGGER COX/ POISSÉ PISTOLET	4.775-019.0	1
1	LINSENSTR. 4, 2X16/ OVAL HEAD STRIP/ VIS A TETE REPASSE	6.362-025.0	1
2	GRIFTFARB/ HANDLE/ BRANCHES PEIGNEZ	5.321-086.0	1
3	LINSENSTR. 4, 2X22/ OVAL HEAD STRIP/ VIS A TETE REPASSE	6.303-024.0	5
4	HEBEL/ LEVER/ GACHETTENSCHW.-DRUCK	5.481-052.0	1
5	VERSCHLUSSEINHAUBE/ CLOSING STRIP/ VIS DE FERMETURE	5.411-087.0	1
6	O-RING 12,42X 1,74/ O-RING/ BAGUE D'ETANCHÉITE	6.362-402.0	1
7	SCHRAUBENTR. HELICAL SPRING/ RESSORT CYLINDRIQUE	5.333-159.0	1
8	VENTILIERER/ VALVE DISC/ TESTE DE SOUPEUR	5.562-058.0	1
9	STANGE/ BAR/ TIGE	5.107-084.0	1
10	O-RING 2,0 KOPF/ O-RING/ BAGUE D'ETANCHÉITE	6.362-571.0	1
11	WUCHENRUCK/ WASI FOLY/ FERMURE NORMALE	5.427-115.0	1
12	O-RING 17,12X 2,62/ O-RING/ BAGUE D'ETANCHÉITE	6.362-486.0	1
13	HEBEL/ LEVER/ GACHETTENSCHW.-DRUCK	5.481-056.0	1
14	SAUFEN/ PIN/ TOURILLON	5.169-091.0	1
15	O-RING 8X1,1/ST.-8,1/ O-RING/ BAGUE D'ETANCHÉITE	6.362-422.0	1
16	HO-SCHLAUCH DN 6/ HIGH PRESSURE HOSE/ TUBOY FLEXIBLE HAUTE PRE.	6.389-061.0	1
17	ERSATZTEILSET/ SPARE PARTS KIT/ KIT DE PIÈCES	2.085-296.0	1
18	ERSATZTEILSET/ SPARE PARTS KIT/ KIT DE PIÈCES	2.083-161.0	1

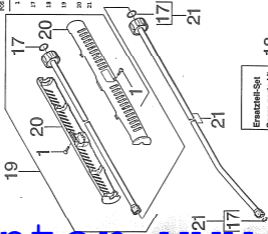


Gruppe 4: Zubehör  
 Group 4: Accessories  
 Groupe 4: Accessoires

# C 4

# HD 690

POS. BEZÜGUNG LIN. DESCRIPTION POS. DESIGNATION	TEILE-NR. PART-NO. NO. PIÈCE	STÜCK- QTY. MAN.
1 LÄNGENRÖHR, 4,2X16/ OVAL HEAD SCREW/ VIS À TÊTE RONDE	6.303-025.0	2
17 ERSAZTEILSATZ/ SPARE PARTS KIT/ KIT DE PIÈCES	2.880-256.0	1
18 ERSAZTEILSATZ/ SPARE PARTS KIT/ KIT DE PIÈCES	2.882-163.0	1
19 STRAHLSCHWENKLADUNG./ NET PIPE-INSTUMENTING/ LAUCE-ALGOZE	4.740-183.0	1
20 GRIFT/ HANDLE/ POIGNEE	5.321-150.0	2
21 STRAHLSCHNITZ/ NET PIPE/ LAUCE D'INCISION	4.740-182.0	1



18  
 Ersatzteil-Set  
 Spare parts kit  
 Kit de pièces

unter [www.g...](http://www.g...)

210 VOLTAGE 17925 UP TO 208, NO 17925 JOGGY/ AU NO. DE PAIR 17925

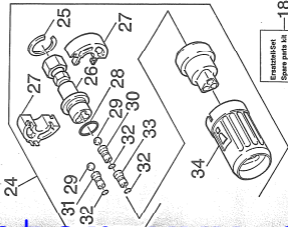
RECHERCHER  
ITEM DESCRIPTION  
POB. DESIGNATION

TEILE-NR.  
PART-NO.  
NO. PIÉCE

STOCK  
QTY.

REF.

10	ERZATZTEILESET/ SPARE PARTS KIT/ KIT DE PIÉCES	2.083-163.0	1
24	TRÉPANS/DRILLS 042/ TRÉPANS NET NOZZLE/ CUCILAN TRĂPUS	4.763-144.0	1
25	8-RING 20X1.2/ STRING CLIP/ CIRCULIP	7.343-151.0	1
26	VERBODENDEKLEEF/ SCREEN UNION PART/ PIÉCE (BACCOSU A VIS)	4.403-043.0	1
27	ERZATZTEILESET/ SPARE PARTS KIT/ KIT DE PIÉCES	2.083-102.0	1
28	O-RING 17,0 X 2,0/ O-RING/ BAGUE D'ÉTANCHÉITÉ	6.362-202.0	1
29	BOHLE 6 6,35/ BOLL/ BOULE	7.403-223.0	2
30	FLÄCHSTRANDLEHRE/ NOZZLE/ RISE JET FLAN	6.413-535.0	1
31	WELLSFRÄHLEHRE/ SOLID SPRAY NOZZLE/ CUCILOR	6.413-563.0	1
32	O-RING 5,0 X 1,0/ O-RING/ BAGUE D'ÉTANCHÉITÉ	6.362-661.0	3
33	FLÄCHSTRANDLEHRE/ NOZZLE/ RISE JET FLAN	6.413-569.0	1
34	SCHUTZTEILE/ PROTECTION PART/ PARTIE PROTECTEUR	5.394-259.0	1



Erzatzteil-Set  
Spare parts kit  
Kit de pièces

18

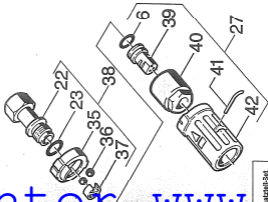




AB MODEL 17925 FROM SER. NO. 17926 A PARTIR DO NO. DE FABR 17926  
 EDI MODEL 19977 UP TO 886. NO 19977 CUSO'D'AD NO. DE FABR 19977

FIG. DESCRIPTION  
 ITH. DESCRIZIONE  
 POS. DESIGNATION

FIG.	DESCRIPTION ITH. DESCRIZIONE POS. DESIGNATION	TEILE-NR. PART-NO. NO. PIÉCE	STOCK QTY. NBR.
6	O-RING 12,42X 1,78/ GARNET/ BAGUE D'ÉTANCHÉITÉ	6.362-688.0	1
22	SCREW/STURTEUTID/ SCHRAUBUNG/ VITE/ PARCOURU PILOTE	4.402-042.0	1
23	O-RING 14,0 X 2,5/ GARNET/ BAGUE D'ÉTANCHÉITÉ	6.362-603.0	1
24	FORGECIL/ MOUNTING PART/ FREFORME	5.030-528.0	1
25	WHEEL 5,8/ BALLE/ BOULE	7.401-902.0	2
26	NUTS/ HOLDERS/ FIDAZIONE	5.042-409.0	1
27	DEFLECTOR 042/ TRIPLE JET NOZZLE/ DIFLEUR TRIPLE	4.763-164.0	1
28	DEFLECTOR 042/ TRIPLE JET NOZZLE/ DIFLEUR TRIPLE	6.415-193.0	1
29	SCREW/STURTEUTID/ SCHRAUBUNG/ VITE/ PARCOURU	5.211-117.0	1
30	WHEEL 5,8/ BALLE/ BOULE	5.037-059.0	1
31	SCREW/STURTEUTID/ SCHRAUBUNG/ VITE/ PARCOURU	5.394-289.0	1



Ersatzteil-Set  
 Spare parts kit  
 kit de pièces



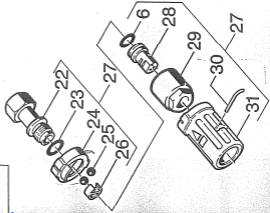
Gruppi 4: Zubehör  
Group 4: Accessorie  
Gruppi 4: Accessorie

F 4

HD 690

Erstzuliefer-Set  
Spare parts kit  
Kit de pièces

18



AB-NUMMER 19978 FROM SER. NO. 19978 A PARTER DU NO. DE FABR. 19978

POS. NUM.	DESCRIPTION INT. DESIGNATION POS. DESIGNATION	TEILE-NR. PART-NO. NO. PIÈCE	STÜCK QTY. NOM.
6	O-RING 12,42X 1,78/ GASKET/ BANDJE D'ÉTANCHÉITE	6.362-480.0	1
18	ERSTZULIEFER- / SPARE PARTS KIT/ KIT DE PIÈCES	2.003-103.0	1
22	SCHRAUBENTUPFEN/ SCREW UNION/ RACKORD FILET	4.402-842.0	1
23	O-RING 14,0 X 2,3/ GASKET/ BANDJE D'ÉTANCHÉITE	6.362-480.0	1
24	FORSTTEIL/ ROLLER PART/ PRÉFORME	5.010-528.0	1
25	WÄHLE, 5,0/ BALL/ BOULE	7.461-902.0	2
26	MÜTTER/ NUTS/ FIXATION	5.042-605.0	1
27	DRITTFACHIGER 038/ TRIPLE JET NOZZLE/ GÜLLENW TRIPLE	4.783-133.0	1
28	DRITTFACHIGER 038/ TRIPLE JET NOZZLE/ GÜLLENW TRIPLE	6.415-553.0	1
29	KEILMÜTTER/ WEDGE NUT/ ECHSUS BOUCOIN	5.311-117.0	1
30	HAUSE/ HOSE/ PATÈRE	5.037-659.0	1
31	SCHUTZTEIL/ PROTECTION PART/ PROTECTOR	5.394-512.0	1



unter [www.g...](http://www.g...)