



KÄRCHER

Ersatzteilliste

Spare Parts List

Liste des pièces de rechange

HD 950 B

1.867-122

1.867-602

unter www.g

GRUPPE 1: EINZELTEILE

A 1 - C 1

GRUPPE 2: PUMPENSATZ

A 2 - D 2

GRUPPE 3: MOTOR

A 3 - C 3

GRUPPE 4: ZUBEHÖR

A 4 - C 4

GROUP 1: COMPONENT PARTS

A 1 - C 1

GROUP 2: PUMP UNIT

A 2 - D 2

GROUP 3: MOTOR

A 3 - C 3

GROUP 4: ACCESSORIES

A 4 - C 4

GRUPE 1: PIÈCES DÉTACHÉES

A 1 - C 1

GRUPE 2: POMPÉ-POMPE

A 2 - D 2

GRUPE 3: MOTEUR

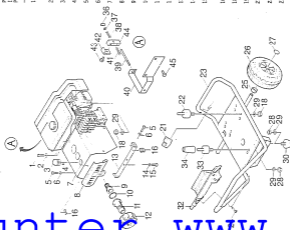
A 3 - C 3

GRUPE 4: ACCESSOIRES

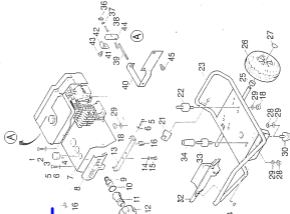
A 4 - C 4

Gruppe 1: Einzelteile
Group 1: Component Parts
Groupe 1: Pièces détachées

Pos. No.	Berechnung Lit. Description POS. DESIGNATION	Teile-Nr. Part-No. NO. PIÉCE	Säck- Dy. REF.
1	Linsenschraube Ø 16/ Oval Head Screw Vis A Tête Ovale	7.306-006.0	1
2	Scheibe Ø 6,4/ Black Disc Disque Ø 6,4	7.312-003.0	1
3	Griff/ Handle/ Poignée	5.321-198.0	1
4	Sicherungskegel/ Retaining Spring/ Ressort d'arrêt	6.313-003.0	1
5	Linsenschraube/ Oval Head Screw/ Vis A Tête Ovale	7.306-006.0	5
6	Scheibe Ø 5,2/ Black Disc Disque Ø 5,2	7.312-002.0	5
7	Haube/ Cap/ Capot	5.050-380.0	1
8	Instrumententafel/ Instrument Board/ Tableau de Bord	5.891-248.0	1
9	Steuer/ Steerer/ Posséir	6.414-282.0	1
10	O-Ring 10x1,78/ O-Ring/ Joint Torique	6.302-395.0	1
11	Schlauchschleife/ Hose Strap/ Record Pour Tuyau	5.443-282.0	1
12	Nutser/ Nut/ Ecrou	5.311-091.0	1
13	Halter/ Support/ Appui	5.042-516.0	1
14	Federling Ø 6/ Spring Washer/ Rondelle Grouper	7.313-003.0	2
15	Zyl-Schraube, M 6x26/ Cheese Head Screw/ Vis A Tête Cylindr.	7.306-022.0	2
16	Metallstichtant, -65/ Sheet Metal Nut, Crown En Tête	6.316-051.0	5
18	Gummihalter M Ø/ Resagon Nut/ Ecrou lix.	7.313-027.0	6
19	Klemmgabel/ Steeper/ Rippe	6.433-053.0	1
21	Halter/ Support/ Appui	5.042-496.0	1
22	Gummipuffer/ Rubber Buffer/ Autoir à Caout.	6.329-101.0	4
23	Rahmen/ Frame/ Cadre	4.050-160.0	1



Nos. Références Item Description Nos. Designation	Tel./Nbr. Part.-No. No. piece	Stock Qty. Qty.
24	Écrou/écrou Vis 4,3x30/ Nut screw/Vis 4,3x30	7.303-384.0 4
25	Meule/ Post/ Drillbit	5.110-378.0 2
26	Roue 8200/ Wheel/ Roue	6.435-129.0 2
27	Schweißbolzen, Ø 25/ Weld-Fastener/ Attache Rapide	6.340-137.0 2
28	Écrou/ Mutter N 3/ Nut/ Hexagon Nut/ Ecrou Hexagonal	7.311-510.0 3
29	Scheibe Ø 6,4/ Disk/ Blaise	7.312-004.0 11
30	Gumiduffen/ Rubber Buffer/ Butoir En Caoutch.	6.309-100.0 2
31	Griff/ Handle/ Poignée	5.321-073.0 1
32	Gumiduffen NR/ Rubber Buffer/ Butoir En Caout.	6.309-060.0 1
34	Zerfen/ Trunion/ Tournillon	5.100-112.0 1
38	Klemmrippe/ Nylon/ Visse de Serrage	6.031-063.0 1
37	Scheibe 3,7/ Washer/ Rondelle	7.312-280.0 1
38	Schraubendreher/ Helical Spring/ Ressort Cylindrique	5.320-248.0 1
39	Stiftschrauber/ Locking Screw/ Goujon Filé	5.308-051.0 1
40	Halter/ Holder/ Fixation	4.042-481.0 1
41	Druckfeder/ Pressure Spring/ Ressort A Pression	5.332-169.0 1
42	Winkel/ Angle/ Angle	5.018-215.0 1
43	Zyl.-Schr. N 4x3/ Hex Head Screw/ Vis A Tête Cylindr.	7.366-420.0 1
44	Halter/ Holder/ Fixation	5.042-517.0 1
45	Schrauber/ Screw/ Vis	6.384-047.0 2



Gruppe 2: Pumpensatz
Group 2: Pump Unit
Groupe 2: Moto-pompe

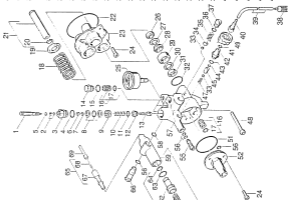
Pos. Item Pos.	Besamung Description Réf. Désignation	Teile-Nr. Part No. Clé.	Stück Qty. Nbr.
1	8Kt.-Schrauber/ Hex-head Cap Screw/ Boulon A Six Pans	5.394-056.0	1
2	0-Ring Kol./1st.-R./ O-Ring Comp./J	6.362-668.0	1
3	Verschlußschrauber/ Screw Plug/ Vis de Fermeture	5.411-057.0	1
4	0-Ring 23x1,5/ O-Ring/ Joint Torlonia	6.362-412.0	1
5	0-Ring 5,28x1,78/ O-Ring/ Joint Torlonia	6.362-175.0	1
6	8Kt.-Mutter M 6/ Hexagon Nut/ Écrou Hex.	7.311-018.0	1
7	8Kt.-Mutter M 6/ Hexagon Nut/ Écrou Hex.	7.311-019.0	1
8	0-Ring 8x1,1x1,75x1/ O-Ring/ Joint Torlonia	6.362-616.0	1
9	Kolben/ Piston/ Piston	5.553-225.0	1
10	Schraubenfeder/ Coil Spring/ Ressort A Boudin	5.332-229.0	1
11	0-Ring 12,42x1,78/ O-Ring/ Joint Torlonia	6.362-480.0	1
12	Ventilator/ Valve Seat/ Siège de Soupape	5.581-129.0	1
13	Ventilbohrer/ Valve Pist/ Ane de Soupape	5.584-083.0	1
14	Ventilschrauber/ Valve Screw/ Vis de Soupape	5.583-096.0	3
15	0-Ring 15,3x2,4/ O-Ring/ Joint Torlonia	6.362-151.0	3
16	Ventil 1st./ Set of Valves/ Ensemble de Soupapes	4.580-175.0	6
17	0-Ring 14,0x2,0/ O-Ring/ Joint Torlonia	6.362-481.0	6
18	Schraubenfeder/ Coil Spring/ Ressort A Boudin	5.332-156.0	3
19	Schraibe/ Disk/ Disque	5.117-885.0	3
20	Seerring 20/ Sealing Ring/ Cretling	6.437-331.0	3
21	Bohrer/ Piston/ Piston	4.553-111.0	3
22	0-Ring 100x1,78/ O-Ring/ Joint Torlonia	6.362-448.0	1



Pos.
Nomenclature
Item Description
Pos. Designation

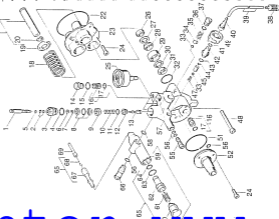
Part-No.
Part-No.
No. Piece
Stock
Qty.
Ref.

23	Gehäuse/ Housing/ Boîtier	5.060-281.0	1
24	231-Schr.-15, N 8x25/ Cheese Head Screw/ Vis à Tête Cylindr.	7.306-042.8	5
25	Motoröl 0-250bar/ Manometer/ Manomètre	6.421-132.0	1
26	Wacring 20x20x5/ Grooved Ring/ Joint En U A Levres	6.384-052.0	3
27	Scheibef/ Disc/ Disque	5.115-254.0	3
28	Wacring 20x20x5/ Grooved Ring/ Joint En U A Levres	6.385-053.0	3
29	Rechter/ Bush/ Bécille	5.112-181.0	3
30	Scheibef/ Disc/ Disque	5.115-224.0	3
31	Wacring/ Grooved Ring/ Joint En U A Levres	6.385-051.0	3
32	O-Ring 34,05x3,78/ O-Ring/ Joint Torique	6.382-084.0	3
33	Agel 07/ Ball/ Balle	7.401-308.0	2
34	Ventilteller/ Valve Head/ Tête de Soupape	5.587-075.0	1
35	Schraubfeder/ Coil Spring/ Ressort A Ressin	5.332-203.0	1
36	O-Ring 12,0x2,47/ O-Ring/ Joint Torique	6.382-109.0	1
37	Ventilschrauber/ Valve Screw/ Vis de Soupape	5.583-089.0	1
38	Filter/ Filter/ Filtre	6.414-27.0	1
39	Schlauch Nr 5/ Flexible Tube/ Tuyau Flexible	6.388-216.0	10
40	Schlauchsteckel/ Hose Stem/ Accessoir Pour Tuyau	5.443-201.0	1
41	O-Ring 16,0x2,47/ O-Ring/ Joint Torique	6.382-151.0	1
42	Schraubstecker/ Screw Socket/ Manchon Filice	5.403-366.0	1
43	O-Ring 14x3,5/ O-Ring/ Joint Torique	6.382-533.0	1
44	O-Ring 6x7/ O-Ring/ Joint Torique	6.382-303.0	1



Pos. Bezeichnung
Item Description
Pos. Designation

Teil-Nr.
Part-No.
Ref.
No. piece
Ref.

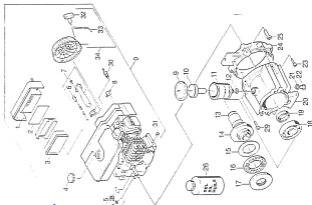


45	Blech/ Tube/ Tube	5.035-764.0	1
47	Schraubenfeder/ Coil Spring/ Ressort A Boudin	5.332-124.0	1
48	Teil -Spr. Nitzstg/ Check-Head Screw Vis à tête Cyllindr.	7.395-122.0	3
49	Griff/ Handle/ Poignée	5.321-199.0	1
51	O-Ring 68x7/ O-Ring/ Joint Torique	6.382-591.0	3
52	Gehäusedeckel/ Cover/ Coque	5.683-297.0	3
55	Dichtungssatz/ Gasket Insert/ Insert de Toiture	5.789-079.0	3
56	O-Ring 54,5/ O-Ring/ Joint Torique	6.382-394.0	6
57	Zylinderkopf Kompl./ Cyl. Head Compl./ Cul. de Cyl. Compl.	4.556-898.0	3
58	O-Ring 124,5/ O-Ring/ Joint Torique	6.382-527.0	3
59	Gehäuse/ Housing/ Boîtier	5.080-335.0	3
60	Verschluss-Schraube/ Screw Plug/ Vis de Fermeture	5.411-887.0	3
61	Schraubenfeder/ Coil Spring/ Ressort A Boudin	5.332-232.0	3
62	Kolben/ Piston/ Piston	5.553-222.0	3
63	O-Ring Kompl./ O-Ring/ Joint Torique	6.382-611.0	3
64	O-Ring 64,1/ O-Ring/ Joint Torique	6.382-575.0	3
65	Drehzahlsteuerung/ Speed Control/ Commande de Vitesse	4.743-815.0	3
66	Hohlschraube/ Bore/ Bolt/ Boulon Creux	5.404-883.0	3
67	Stellschraube/ Screw/ Vis	6.431-884.0	3
68	Litzseil/ Strand/ Torsion	6.431-883.0	3
69	Drehstift/ Cover/ Gaine	6.431-864.0	1

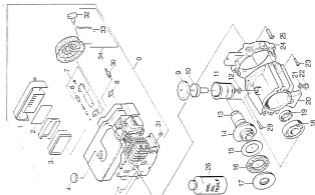


Gruppe 3: Motor
Group 3: Motor
Groupe 3: Moteur

unter www.g



Pos. No.	Beschriftung Description Pos. Designation	Teil-Nr. Part-No. No. piece	Stück Qty. Qty.
0	Benzinmotor 950/ Gasoline Engine/ Moteur A Essence	6.491-248.0	1
1	Abdeckhaube Kol./ Cover/ Capot	6.491-254.0	1
2	Luftfilterrollen/ Air Filter Fleece/ Filson de Filtrre A	6.491-255.0	1
3	Luftfilter/ Air Filter/ Filtre A Air	6.491-256.0	1
4	Tankdeckel/ Tank Cover/ Bouchoe (Reservoir)	6.491-251.0	1
5	Seilverschraub/ Oil Fill Rod/ Jauge Niveau D'huile	6.491-252.0	1
6	Kontrolllampe/ Pilot Lamp/ Lampe Témoin	6.491-256.0	1
7	Deinwaehler/ Ign. Controller/ Gastro Icar	6.491-257.0	1
8	Benzinfilter/ Gasoline Filter/ Filtre B'essence	6.491-220.0	1
9	Deckel/ Cover/ Gouvercle	6.067-249.0	1
10	forenstell/ Prevalent/ Preference	5.020-189.0	1
11	Schaltarm/ Rectractor/ Rectifiant	5.070-048.0	1
12	Dichtering/ Joint Ring/ Anneau D'etanchéité	5.303-100.0	1
13	O-Ring 24,7x 5,33/ O-Ring/ Joint Torique	6.303-612.0	1
14	Trommelachse/ Swash Plate/ Disque Et Rotation	4.120-146.0	1
15	Leufschreiber/ Motor Disk/ Disque de Rice	6.403-122.0	1
16	Asiat-Rollenrollen/ Roller Thrust Capet Succes A Basilhaus	6.403-123.0	1
17	Druckschalbe H. bar/ Pressure Disk/ Disque de Pression	6.403-124.0	1
18	Regelrollenlager 41/ Taper Roller Bearing/ Palier Con.3 Roll.	6.403-113.0	1
19	W-Richtring 40/52/ Joint Ring/ Segas A Leeres	7.387-011.0	1
20	Seilverschraub/ Bolt/ter	5.069-232.0	1



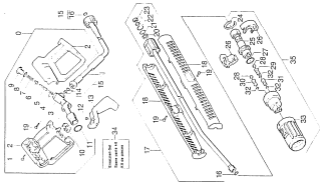
Pos. Beschriftung
Item Description
Pos. Destinazione

Pos.	Beschriftung Item Description Pos. Destinazione	Teller-Nr. Part-No. No. Piece	Stück Qty. Qty.
21	Dichtung A. (excl.) Joint Ring/ Anello O-stanchette	7.362-005.0	1
22	V.-schraube M1x1,4/ Screw Plug/ Vis de fermeture	7.362-233.0	1
23	Zyl-Schr.-15, H 8x38/ Cheese-Head Screw/ Vis A Tete Cylindr.	7.366-040.0	3
24	Flansch/ Flange/ Brida	5.122-133.0	1
25	Zylinderkopf/ Cheese Head Screw/ Vis A Tete Cylindr.	6.204-026.0	4
26	Motorenöl 1L/ Engine Oil/ Huile A Moteurs	6.288-050.0 *	2
28	Passfedern/ Feather Key/ Ressort D'Ajustage	6.401-176.0	1
29	Zyl-Schr.-15, H 6x25/ Cheese Head Screw/ Vis A Tete Cylindr.	7.366-023.0	1
30	Zündkerze/ Ignition Plug/ Bougie 8°/lumog	6.491-250.0	1
31	Drain-Schraube/ Oil Drain Screw/ Bouchon Vidange Nut	6.491-253.0	1
32	Griff F.-Startersel/ Handle/ Poignée	6.491-260.0	1
33	Anlassersel/ Starter Rope/ Cable de Demarrage	6.491-212.0	1
34	Handstarter 60L/ Hand Starter/ Demarreur 60ains	6.491-259.0	1

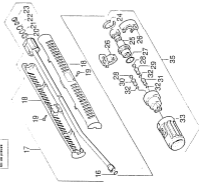
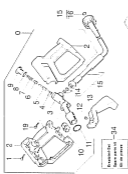
* Kerosin/ Motor Oil 0.55 l.
Motor/ Moteur 1,1 l.

Gruppe 4: Zubehör
Group 4: Accessories
Groupe 4: Accessoires

unter www.karcher.com



Pos. / Emplacement Lieu / Description Pos. / Designation	Part-No. / Ref. / No. piece	SGEEK Dep. SFR.
0 Handgriff/Levier/ Trigger Gear/ Poignée-Pisciolet	4.775-079.0	1
1 Schraube 4,3x22/ Screw/ Vis	6.363-024.0	5
2 Griffhaar/ Grip Hair/ Poire de Poignée	5.321-006.0	1
3 Knochensockel/ Strut Attach./ Fitt./ femure Noéale	5.427-115.0	1
4 O-Ring Kompl./ O-Ring Complete/ Joint. Torloque Comp.	6.365-071.0	1
5 Stange/ Rod/ Perche	5.187-004.0	1
6 Ventillatte/ Valve Head/ Tête de Soupape	5.585-058.0	1
7 Schraubfeder/ Coil Spring/ Ressort A Boudin	5.332-157.0	1
8 O-Ring 12,42x1,78/ O-Ring/ Joint Torloque	6.362-080.0	1
9 Verschluss-Schraub/ Screw Plug/ Vis de Fermeture	5.411-007.0	1
10 Hebel/ Lever/ Levier	5.481-052.0	1
11 O-Ring 17,12x2,62/ O-Ring/ Joint Torloque	6.365-086.0	1
12 Zaufen/ Tression/ Tourillon	5.109-087.0	1
13 Hebel/ Lever/ Levier	5.481-066.0	1
14 O-Ring 4pl./1st.-R./ O-Ring/ Joint Torloque	6.362-022.0	1
15 Hal-Schlauch 14,810 ml 1/2-Hose/ Tuyau Soupape A 1/2	6.369-176.0	1
16 O-Ring-Set (3 Stück)/ O-Ring Set (3 Pieces)/ Jeu de 3 Joints Torloques	2.000-296.0	1
17 Strohröhr 10x40lg/ Spray Lance/ Lance 0°/Incendie	4.760-100.0	1
18 Griff/ Handle/ Poignée	5.321-158.0	2
19 Schraube 4,3x16/ Screw/ Vis	6.303-025.0	3
20 Dichtung 12x1,5/ Sealing Ring/ Bague 0°/Étanchéité	6.362-529.0	1



Pos. Item Pos.	Bezeichnung Description Designation	Teil-Nr. Part-No. No. Piece	Stück Qty. Qty.
21	Kugel 4 1/2 Ball/1/2 Beale	7.401-921.0	12
22	O-Ring 37x1,5/ O-Ring/ Joint Torique	6.362-524.0	1
23	Hal-Ring 6H. 1st. r./ Grooved Ring/ Joint. Et B A Levers	6.362-532.0	1
24	5-Ring 26x1,27 Sealing Ring/ Circlip	7.343-131.0	1
25	Verschraubestell/ Screw Fitting/ Accord Visse	4.401-849.0	1
26	ET-Set Formelteil/ Spare Parts Kit Priform/ Kit de Pieces Performes	2.003-102.0	1
27	O-Ring 17,0 x 2,0/ O-Ring/ Joint Torique	6.362-530.0	1
28	Kugel Ø 6,35/ Ball/1/2 Beale	7.400-929.0	2
29	Flachstr.-duse 4025/ Nozzle Noeupoleur/ Noz de Base	6.415-535.0	1
30	Vollstr.-duse 0305/ Nozzle Noeupoleur/ Noz de Base	6.415-540.0	1
31	Flachstr.-duse 2505/ Nozzle Noeupoleur/ Noz de Base	6.415-544.0	1
32	O-Ring 5,0 X 1,6/ O-Ring/ Joint Torique	6.362-661.0	3
33	Schutzteil/ Protection Part/ Piece de Protection	5.384-259.0	1
34	Ersatzteilset siehe 01106/et/ E16/ Spare Parts Kit see Barré E16/ Kit de Pieces voir Tableau E16	2.883-105.0	1
35	Dreifachdüse 05/ Triple Nozzle/	4.763-129.0	1



unter www.g...

Telle sind in Kreuztafelset 2.883-105 enthalten
 parts included in spare kit 2.883-105
 pièces comprises dans le jeu de pièces rechange 2.883-105

Grupos Items Groupes	Pos. Item Pos.	Memorans Designation Designation	Tel.-Nr. Part No. no. pièce	Stock Qty. rés.
4	4	O-ring compl./ O-ring compl./ Joint torique compl.	6.342-571	1
	8	O-ring/ O-ring/ Joint torique/ 12.4281.78	6.342-480	1
	11	O-ring/ O-ring/ Joint torique/ 17.1282.62	6.342-496	1
	16	O-ring/ O-ring/ Joint torique/ 10.0x2.0	7.342-511	5
	20	Sealring/ Sealing ring/ Bague d'étanchéité/ 12x1,5	6.342-539	1
	21	Eyelet/ Bell/ Solet/ 4d	7.481-021	12
	22	O-ring/ O-ring/ Joint torique/ 17x1,5	6.342-524	1
	23	Sealring kpl. int.-R/ grooved ring/ Joint en U à lèvres	6.342-532	1
	27	O-ring/ O-ring/ Joint torique/ 17x2	6.342-540	1
	22	O-ring/ O-ring/ Joint torique/ 1x1	6.342-661	3

