

HIGH POWER 300

ALTO[®]
Total Cleaning
Confidence[™]



Reserve de le
Spare parts
Ersatzteile
Pièces détachées

5985161 - 22. Nov. 2001

Ersatzteile auf www.gluesing.net

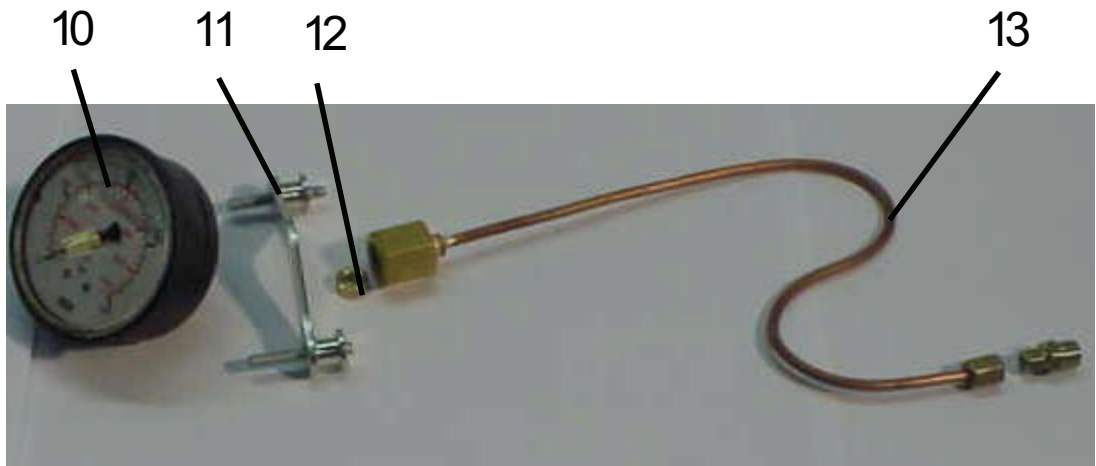
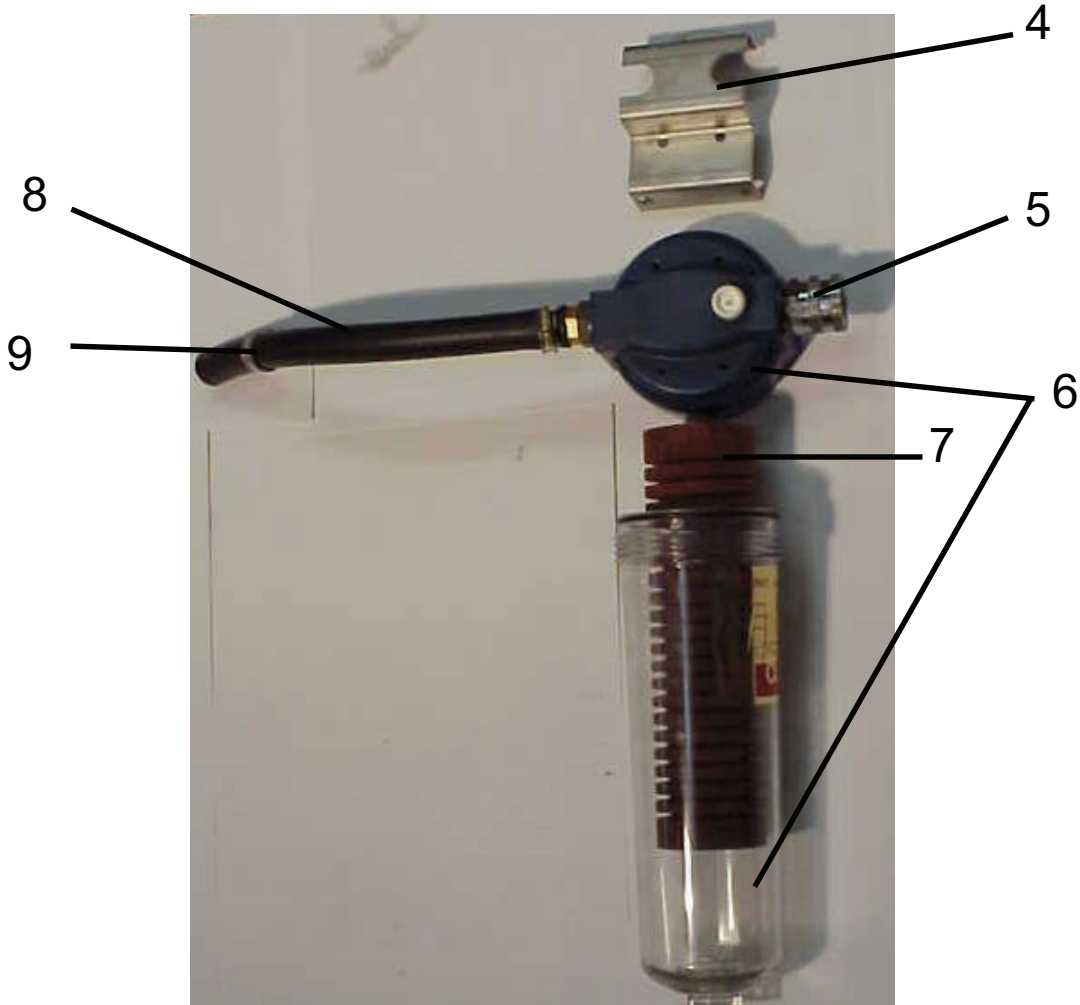
**WAP
KEW**
TECHNOLOGIES



			Main ass.	
Pos.	Part no.:	Beskrivelse:	Des.:	Qty.:
1	4809738	Sideplade	Side plate	1
2	4809813	Topplade	Top plate	1
3	4809739	Endeplade	Side plate	1
4	4809858	Sideplade m. huller	Side plate w. holes	1
5	4809805	Transfer skilt HIGH POWER 300	Label transfer HIGH POWER 300	2
6	4810358	Stel	Chassis	1
7	4809753	EI-motor, kompl.	Electric Motor, kompl.	1

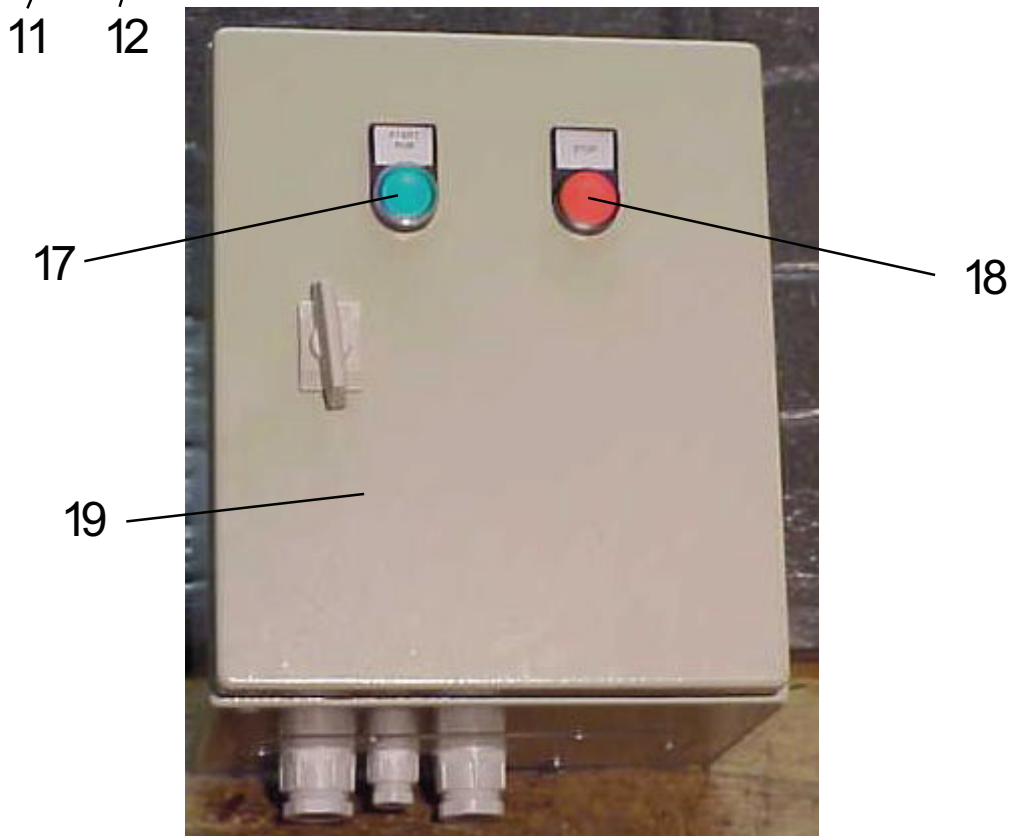
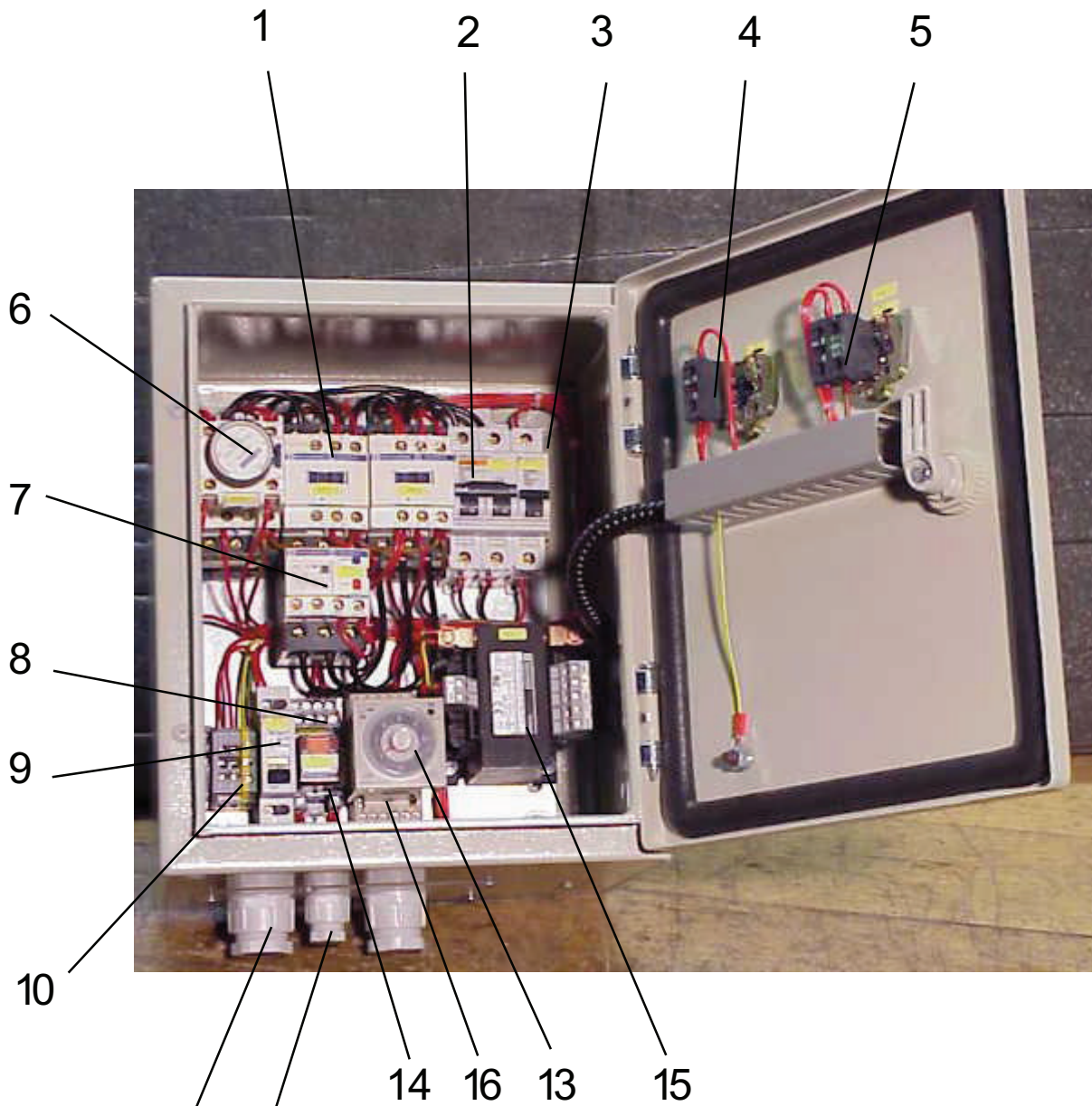


1 2

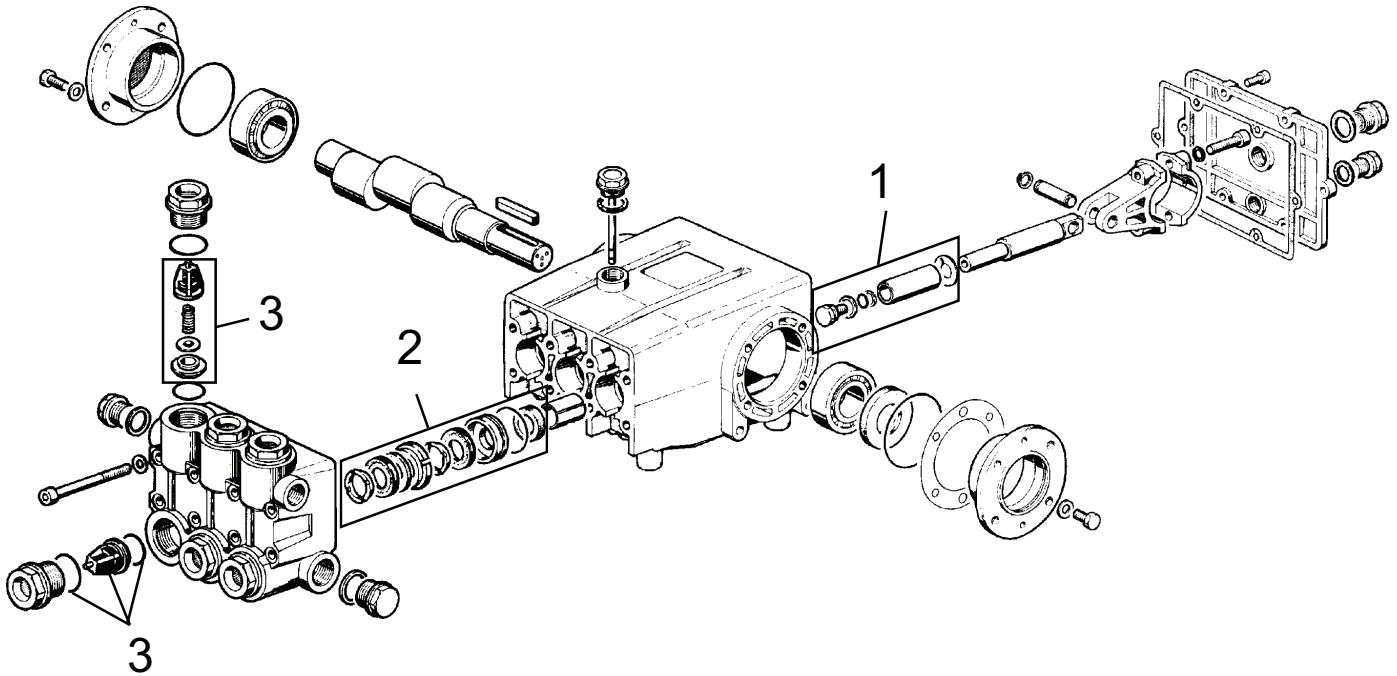


5985161 - 22. Nov. 2001

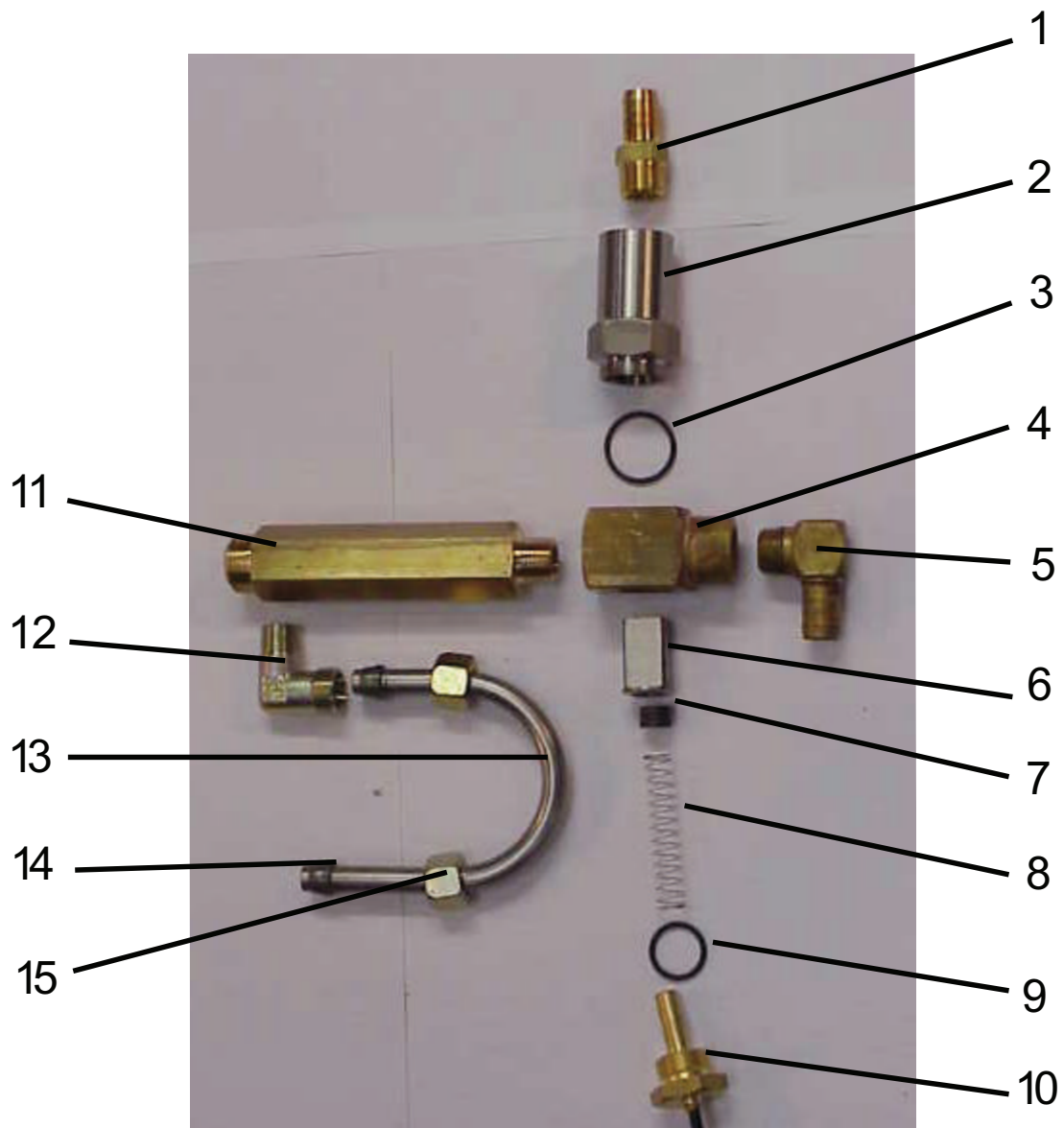
HIGH POWER 300			Main ass.	
Pos.	Part no.:	Beskrivelse:	Des.:	Qty.:
1	2003481	Navkapsel	Hub cap	4
2	4809143	Hjul	Wheel	4
3	3802212	Trækaflastning	Cable lead-in	1
3	3808169	Kontramøtrik	Lock nut	1
4	4809145	Beslag f. sandfilter	Fitting f. sand filter	1
4	4814096	Skrue f. beslag	Screw f. fitting	2
5	1602945	Lynkobling 3/4"	Quick coupling 3/4"	1
6	1604461	Sandfilter	Sand filter	1
7	1104041	Filterindsats	Cartridge filter	1
8	5206230	Slange 0.8m	Hose 0,8m	1
9	1802107	Spændebånd	Hose clip	2
10	4809763	Manometer 400bar	Pressure gauge	1
11	1808088	Spændestykke f. manometer	Clamp	1
12	1602127	Manometerring 1/4"	Pressure gauge ring	1
13	6220678	Manometerforskruning	Threaded connection f. pressure gaug	2
14	4809172	EI-kabel 4x6,0 H07RN-F	Electric cable	1



HIGH POWER 300			El-box ass.	
Pos.	Part no.:	Beskrivelse:	Des.:	Qty.:
1	4800075	Kontaktor	Contactator 18A	1
1	4800074	Kontaktor	Contactator 9A	1
2	4800081	Automatsikring 2 pol.	Automatic fuse 2 pol.	1
3	4800080	Automatsikring 1 pol.	Automatic fuse 1 pol.	1
4	4800085	Trykknop	Push button	1
5	4800084	Lampetrykknop	Light indicator button	1
6	4800078	Timer relæ	Timer relay	1
7	4800070	Termorelæ	Thermal relay	1
8	4800073	Scrack relæ	Scrack relay	1
9	4800079	Afbryder	Switch	1
10	4800077	Jordklemme	Earth terminal	1
11	60587	Kabelgennemføring PG21	Cable gland PG21	2
12	60585	Kabelgennemføring PG11	Cable gland PG11	1
13	4800072	Omron Timer	Omron Timer	1
14	4800076	Sokkel scrack relæ	Socket f. Scrack relay	1
15	4800071	Transformer	Transformer 400 / 24V DC	1
16	4800086	Sokkel f. omron timer	Socket f. omron timer	1
17	4800088	Trykknop ON	Push botton ON (green)	1
18	4800087	Trykknop OFF	Push botton OFF (red)	1
19	4809782	El-kasse kompl.	El-box complete	1

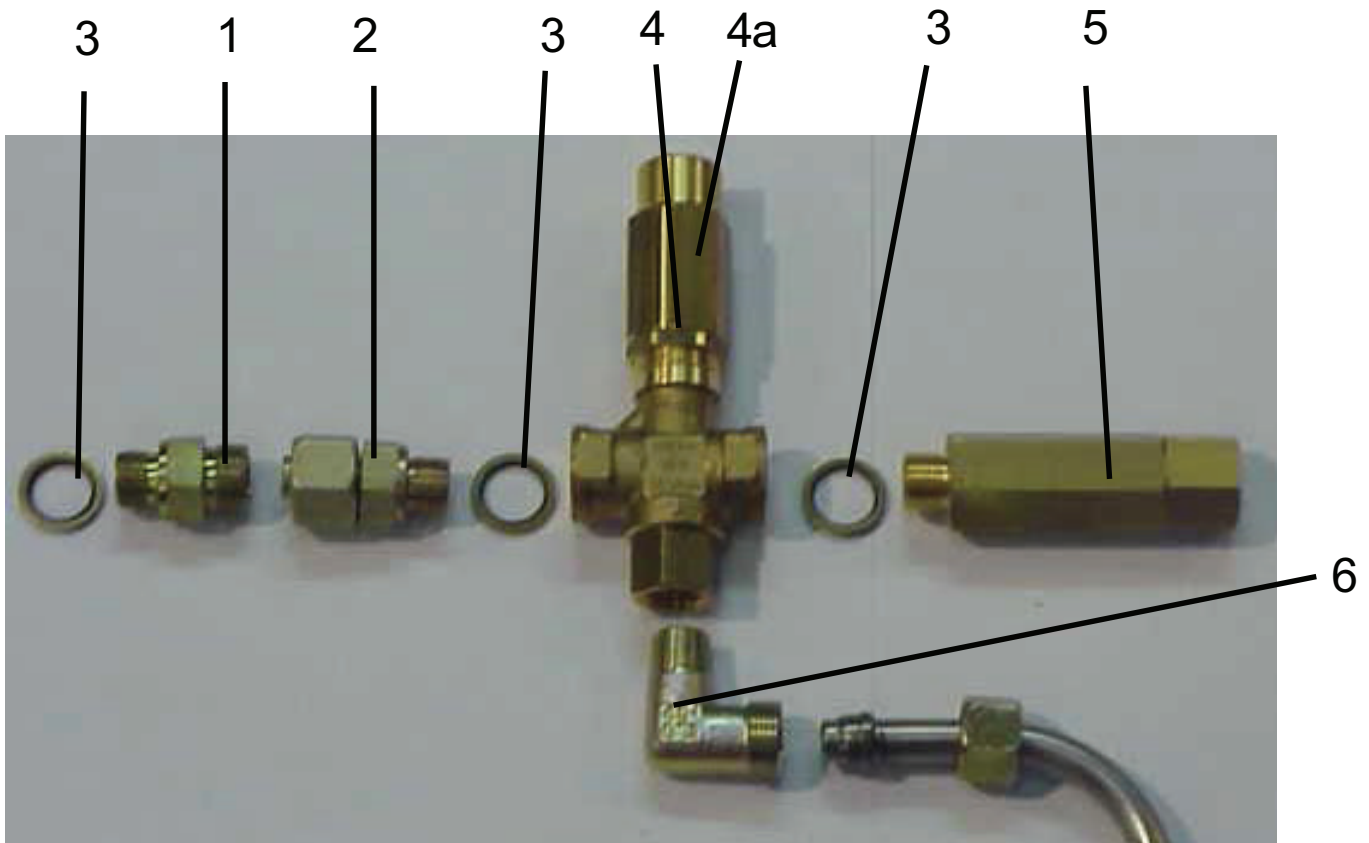


HIGH POWER 300			Pump ass.	
Pos.	Part no.:	Beskrivelse:	Des.:	Qty.:
-	4809752	Pumpe kompl.	Pump, compl.	x
1	4809789	Stempelsæt	Plunger kit	1
2	4809792	Rep.sæt trykringe	Kit pressure rings	1
3	4809790	Ventilsæt	Valve sub-assembly	1

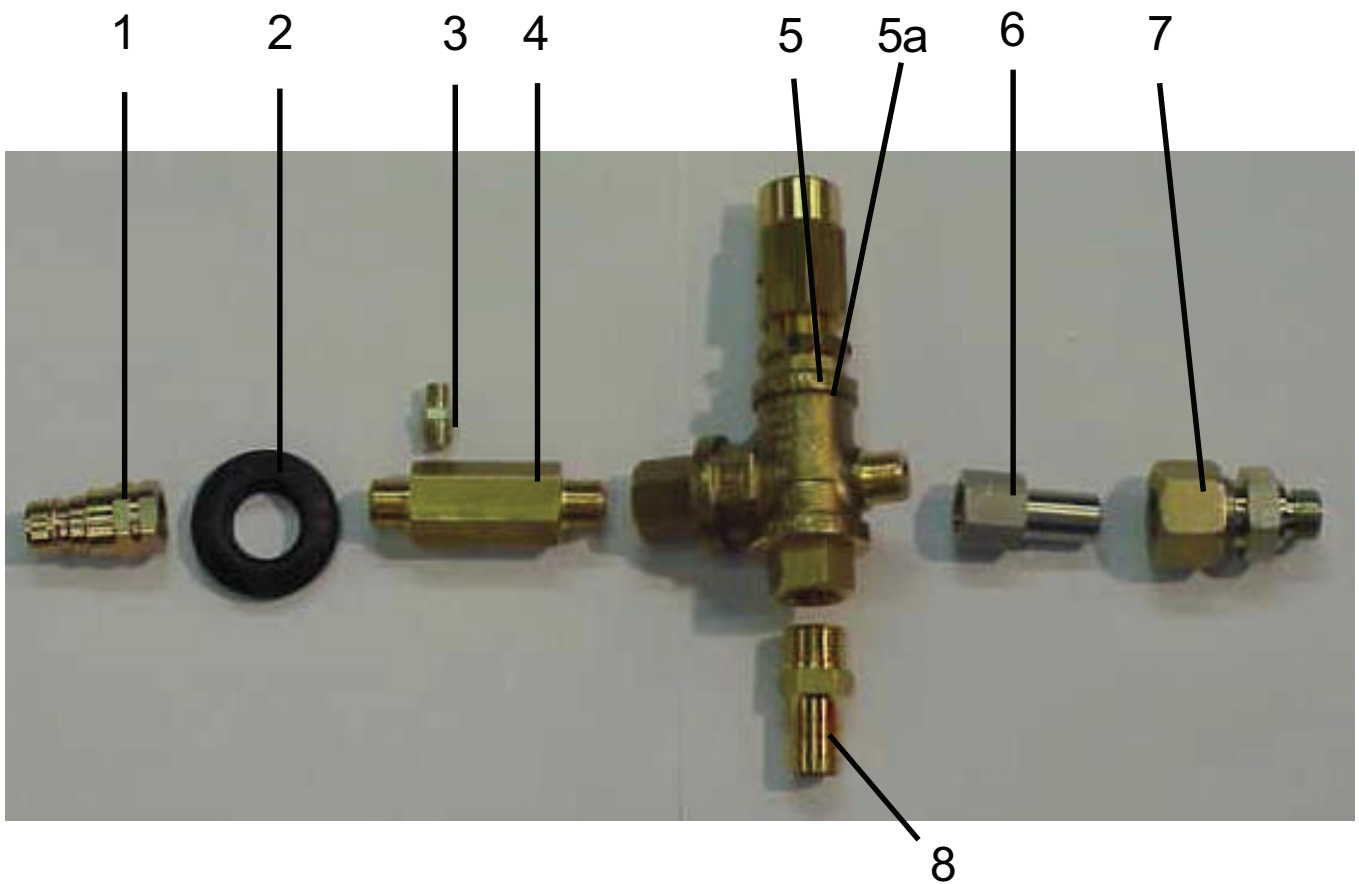


HIGH POWER 300			Overflow switch	
Pos.	Part no.:	Beskrivelse:	Des.:	Qty.:
1	1602341	Slangestuds	Hose socket	1
2	4809887	Indløbshus	Inlet housing	1
3	3001294	O-ring	O-ring	1
4	4809888	Cylinderhus	Cylinder housing	1
5	6101752	Vinkel	Elbow	1
6	7302056	Stempel	Piston	1
7	1803485	Ringmagnet	Ring magnet	1
8	4809865	Fjeder	Spring	1
9	3000825	O-ring	O-ring	1
10	6221773	Bundstrue m. reedkontakt	Reed switch	1
11	4809810	Overgang f. vandtilgang	Intermediate piece	1
12	1600444	Vinkel	Elbow	1
13	4809836	Rør	Tube	1
14	1600469	Skærerings	Cutting ring	2
15	1600451	Omløber	Union nut	2

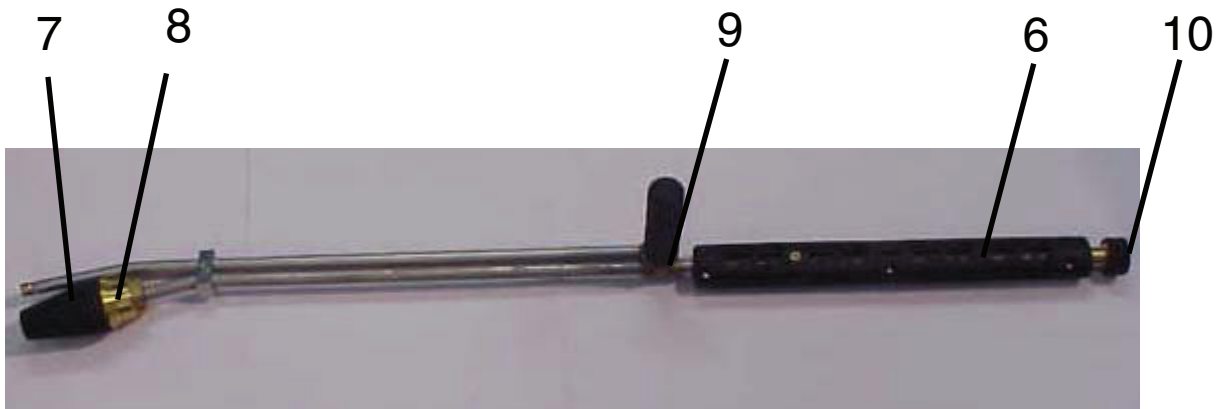
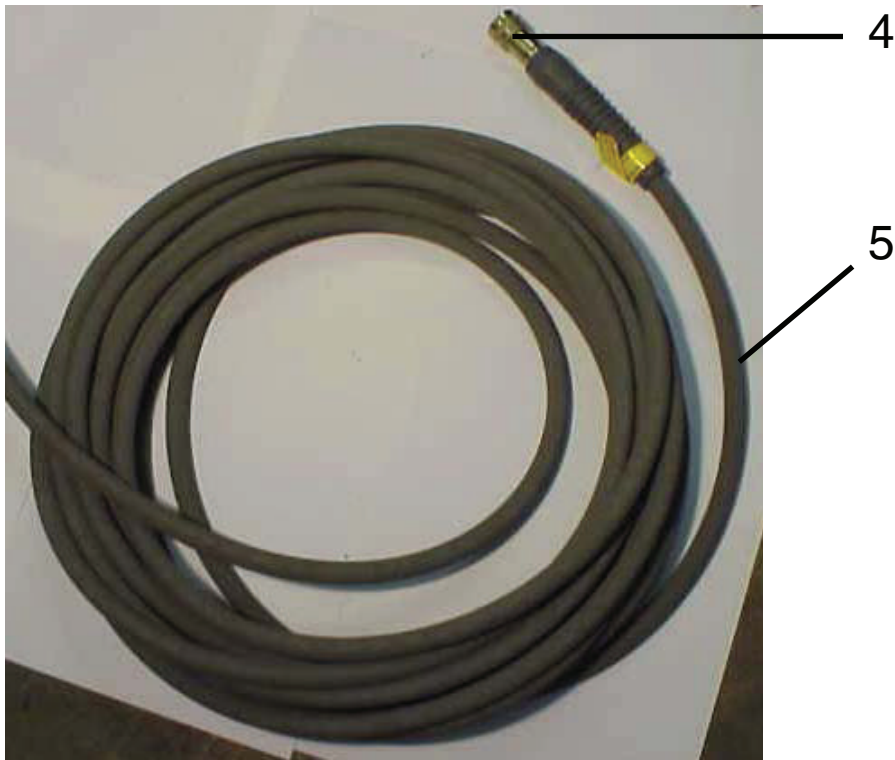
5985161 - 22. Nov. 2001



HIGH POWER 300			Safety valve ass.	
Pos.	Part no.:	Beskrivelse:	Des.:	Qty.:
1	4809820	Ligeforskruning	Threaded connection	1
2	4809819	Lige studs	Socket	1
3	1801075	Tætningsskive	Sealing washer	3
4	4809786	Sikkerhedsventil	Safety valve	1
4a	4809797	Rep.sæt sikkerhedsventil	Rep.kit safety valve	1
5	4809787	Dæmper	Pressure accumulator	1
6	1600444	Vinkel	Elbow	1



HIGH POWER 300			Overflow valve	
Pos.:	Part no.:	Beskrivelse:	Des.:	Qty.:
1	4809766	Stiknippel	Nipple	1
2	6124164	Tætningsring	Gasket ring	1
3	1603422	Ligeforskruning	Threaded connection	1
4	4809807	Trykafgang	Seat	1
5	4809785	Omløbsventil	By-pass valve	1
5a	4809794	Rep.sæt omløbsventil	Rep.kit by-pass valve	1
6	4809837	Forskruning Ø16x3/8"	Fitting Ø16x3/8"	1
7	4809817	Ligeforskruning	Threaded connection 3/8"xØ16	1
8	1602341	Slangestuds	Hose socket	1



			Trigger gun ass.	
Pos.	Part no.:	Beskrivelse:	Des.:	Qty.:
1	4809775	Spulehåndtag, kompl.	Trigger gun compl.	1
2	4809883	Brystnippel	Hexagon nipple	1
3	4809791	Rep.sæt kompl.	Repair kit compl.	1
4	1401983	Sværtedefri slange	Hose grey	1
5	4809765	Lynkobling	Quick coupling 3/8"	1
6	4810333	Dyserør	Nozzle lance	1
7	4809848	Kit, f. Powerspeeddyse	Kit f. Powerspeed nozzle	1
8	4809769	Powerspeed dyse kompl.	Powerspeed nozzle 135bar	1
9	4809760	Ventil m. sidegreb	Valve w. cross grip	1
10	3001211	O-Ring	O-ring	1

